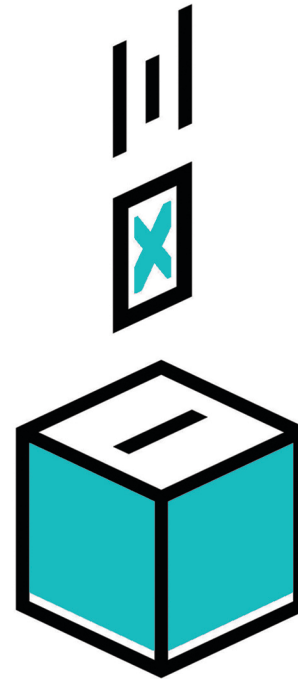


STUDENTS' GUIDE TO VOTING

in the 2018 Municipal Election

    @cfsontario



Am I Eligible to vote?

- 18 years or older on Election Day
- Canadian Citizen
- Qualify to vote in your municipality

How to Register

- Your name must appear on the voters list in order to cast a ballot.
 - You can check if you're on the list at www.voterlookup.ca.
- After September 1, you can add or make changes to your name using the website or by applying with your municipal clerk and proving you are eligible to vote (see eligibility).
- You have until polls close to apply for any changes or additions to the voters list.

THIS IS YOUR STUDENT MOVEMENT

You and over 500,000 other domestic and international college, undergraduate and graduate students across the country are united as members of the Canadian Federation of Students.

Get involved!

Want to organize your campus in the fight for more accessible education, social justice and sustainable communities? Contact federation@cfsontario.ca.

    @cfsontario.ca

How to Vote

- In person at your municipality's or ward's polling station.
- Voting takes place on Monday, October 22 from 10 AM to 8 PM (ET) across the province.
- Your employer is obligated to provide you with up to three hours to go vote.
- Advanced voting takes place between Saturday, October 6 and Sunday, October 14. Visit your municipality's website for the exact date and time of advanced polls in your area.
- The list of polling stations will be made available after September 4.

Identification to Bring When Voting

- Proof that you are the person whose name appears on the voters list.
 - The identification must show your name and address.
 - Examples of identification include (but are not limited to):
 - Ontario driver's license
 - Ontario health card
 - Ontario photo card
 - Mortgage, lease or rental agreement
 - Credit card statement
 - Bill for hydro, telephone, internet, water or gas
 - Insurance policy
 - Transcript or report card from a post-secondary school
- *Canadian passports are not acceptable as identification as the owner of the passport writes their address inside themselves.

How to Qualify for Your Municipality

Resident Electors:

You live in the municipality. You either own property or rent a place, live in shared accommodations (where you do not pay rent) or live in the municipality in question with no fixed address.

Non-Resident Electors and Spouses of Non-Resident Electors:

You or your spouse own or rent property in another municipality, but it is not where you live. Please note, you can only be a Resident Elector in one municipality.

Choosing Your Municipality

There is a special rule for students who may be living away from home while attending post-secondary education. If you are a student and consider "home" to be the place where you live when you are not attending school (i.e. you plan on returning there), then you are eligible to vote in **both** your "home" municipality and in the municipality where you live while attending school.